



CLADO

About Us

Enduring structures made possible by CLADO

CLADO produces its products in line with global standards, prioritizing an eco-friendly approach born from rigorous research and development efforts. Such innovation is a product of the advanced technology nurtured by the skilled team at CLADO's state-of-the-art production hubs. The in-house labs constantly adapt to the evolving facade needs, ensuring their existing products consistently meet the high bar they've set.

With a seasoned team at its helm, CLADO continually devises novel solutions, tailored both to the shifting global market dynamics and the specific requirements of individual projects. Throughout this process, there's no compromising on quality, as regular tests are conducted within their labs.

Each item crafted at the CLADO facilities is tailored to the unique climate conditions of its destination country. Rigorous lab testing ensures that the longevity of CLADO's products matches the durability of the buildings they adorn.



What we do

Exterior Modular Wall Cladding Design

Ideal for New Constructions, Refurbishments, and Thermal Insulation Endeavors. CLADO's system is tailored for both new builds and renovations, targeting exquisite facade aesthetics coupled with top-tier thermal insulation at a competitive price. The CLADO range is designed for the external enhancement and thermal finishing of walls, meeting the most rigorous insulation efficiency standards. Enhanced thermal resistance translates directly into notable cost savings, ensuring a swift return on your insulation investment. It's the optimal choice for energy-efficient homes, passive houses, and any scenario demanding the pinnacle of thermal insulation, aesthetic appeal, and speedy installation.



An Elevated Advantage Over Conventional External Thermal Insulation.



Rapid Installation

Offers a quicker setup than conventional thermal insulation methods such as plaster and mesh application.



Neat & Tidy

Compared to traditional methods, CLADO's solution is notably cleaner. This stands out, especially in renovation projects, where there's no risk of dirtying shutters or air-conditioning systems with plaster.



Economical Labor

The labour cost for CLADO's system is notably lower than its traditional counterparts.



Superior Insulation

CLADO's Decorative Insulation System is crafted from EPS with a density of 24–30 kg/m³, ensuring enhanced insulation compared to the 16kg/m³ EPS density found in typical external insulations.



Seamless Finish

Materials treated under controlled factory conditions deliver a smoother finish, eliminating the common plastering and trowel marks that become evident under side sunlight with conventional methods.



Artistic Versatility

The panels can be tailored into diverse designs, enabling boundless architectural creativity. The external CLADO facade can mimic textures like Wood, Terra Cotta, Ceramic, or Facing Brick.



Flawless Application

Our user-friendly prefab products drastically reduce the chances of labor-related errors.

Exterior Moldings and Accents

Crafted using the distinctive mesh-free EPS/Styrofoam Coating Technology, CLADO caters to the commercial, residential, and entertainment sectors. CLADO's architectural elements are meticulously designed to elevate building exteriors, ensuring longevity in every piece. By choosing CLADO's products, you bypass issues commonly found in conventional cementitious or other synthetic renders, such as surface cracking, detachment, and colour fade. Our products not only offer durability but also present unmatched versatility, accommodating even the most intricate designs, be it flat or contoured, concave or convex. The finish can replicate a stony texture, pristine white, and when painted, radiates vivid colours.



Features of Moldings and Trim

- Adaptable exterior finish
- Robust and durable
- High resistance to impacts and mechanical forces
- Long-lasting, even in extreme weather conditions
- Minimal water uptake
- Exceptional tolerance to temperature and moisture fluctuations
- Superior bonding capacity
- Optimal CO₂ and water vapour permeability, promoting faster moisture transfer and evaporation for walls that breathe
- Quick and straightforward installation of architectural designs
- Direct application of primer and paint topcoat
- Excellent compatibility with exterior construction paints
- The pure white coating facilitates the application of bright, vivid shades
- Ideal for a vast array of architectural forms.



Interior Moldings and Accents

Crafted with advanced cut and injected XPS Technology. CLADO is at the forefront of innovation, integrating cutting-edge technology, materials, and design. The outcome is a holistic collection crafted by and for discerning professionals: encompassing moldings, trims, skirtings, and lighting profiles. Products are either derived from precision hot-cut XPS blocks or are intricately injected to form complex shapes. This ensures a swift and cost-effective solution for embellishing any interior environment.

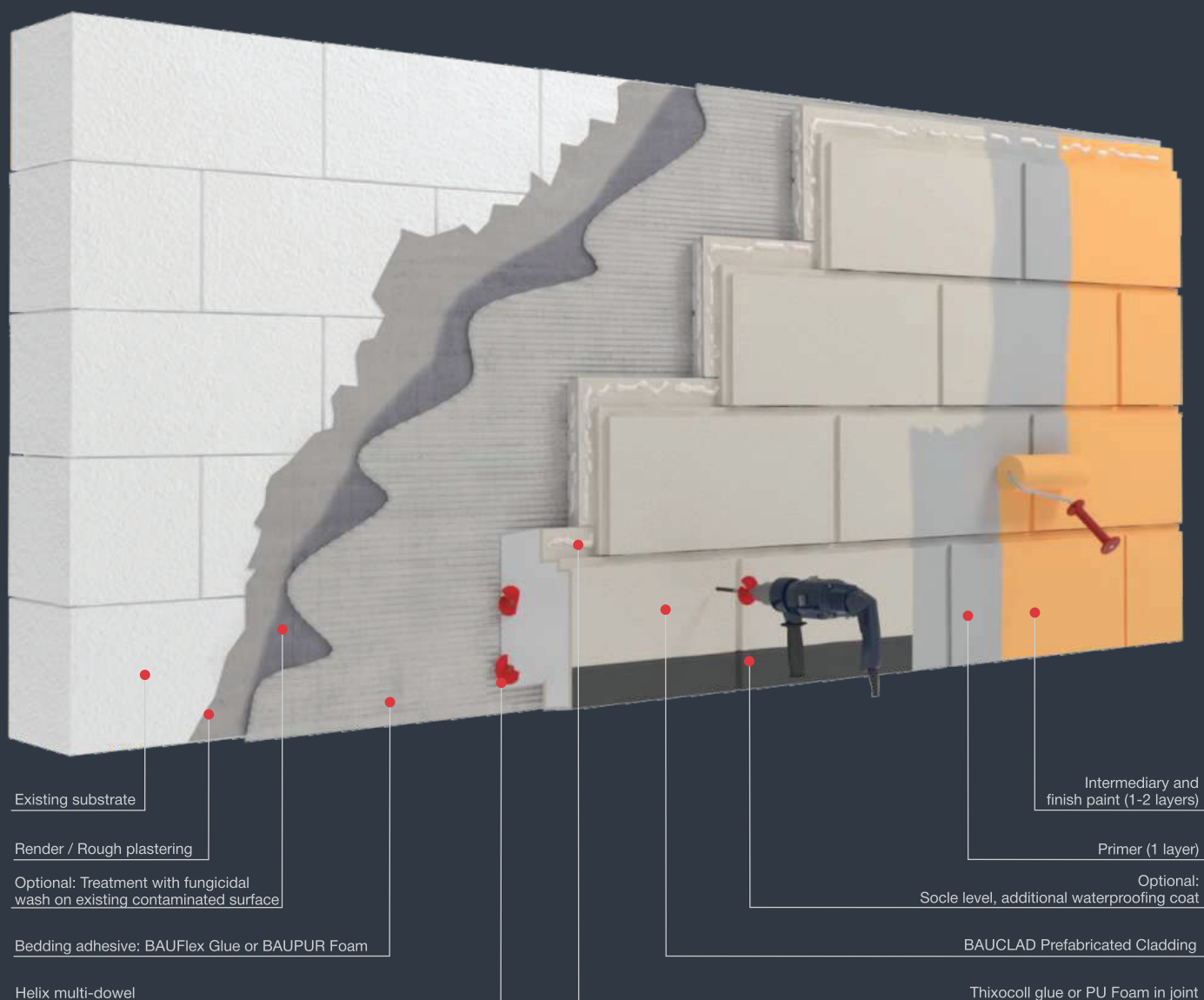


Exterior Prefabricated Design Wall Cladding

Perfect for new buildings, Renovations and Thermal insulating projects

The system is recommended for new constructions and renovations where facade aesthetics with high quality thermal insulation at an acceptable price is a target. The BAUCLAD product range is intended for external decorative thermal insulation and finishing of wall constructions with the highest demands on insulation efficiency. The increased thermal resistance leads to an immediate significant reduction in costs and the investment return on thermal insulation is fast.

Ideal usage for low-energy and passive houses and everywhere where is need to achieve maximal thermal insulation, best aesthetics and fastest installation time.



Window Still Decoration



METRIC MEASUREMENTS	IMPERIAL MEASUREMENTS
56 x 90 x 2000 mm	2.20 x 3.54 x 98 in
75 x 120 x 2000 mm	2.94 x 4.72 x 98 in
93 x 150 x 2000 mm	3.67 x 5.91 x 98 in



METRIC MEASUREMENTS	IMPERIAL MEASUREMENTS
100 x 150 x 2000 mm	3.94 x 5.91 x 98 in
117 x 175 x 2000 mm	4.60 x 6.89 x 98 in
147 x 220 x 2000 mm	5.77 x 8.66 x 98 in



METRIC MEASUREMENTS	IMPERIAL MEASUREMENTS
88 x 122 x 2000 mm	3.46 x 4.80 x 98 in
108 x 150 x 2000 mm	4.26 x 5.91 x 98 in
125 x 175 x 2000 mm	4.97 x 6.89 x 98 in



METRIC MEASUREMENTS	IMPERIAL MEASUREMENTS
100 x 140 x 2000 mm	3.94 x 5.51 x 98 in
125 x 175 x 2000 mm	4.92 x 6.89 x 98 in
143 x 200 x 2000 mm	5.62 x 7.87 x 98 in



METRIC MEASUREMENTS	IMPERIAL MEASUREMENTS
80 x 137 x 2000 mm	3.15 x 5.39 x 98 in
102 x 175 x 2000 mm	4.02 x 6.89 x 98 in
117 x 200 x 2000 mm	4.60 x 7.87 x 98 in



METRIC MEASUREMENTS	IMPERIAL MEASUREMENTS
90 x 125 x 2000 mm	3.54 x 4.96 x 98 in
107 x 150 x 2000 mm	4.22 x 5.91 x 98 in
125 x 175 x 2000 mm	4.92 x 6.89 x 98 in



METRIC MEASUREMENTS	IMPERIAL MEASUREMENTS
140 x 150 x 2000 mm	5.51 x 5.91 x 98 in
163 x 175 x 2000 mm	6.43 x 6.89 x 98 in
187 x 200 x 2000 mm	7.35 x 7.87 x 98 in



METRIC MEASUREMENTS	IMPERIAL MEASUREMENTS
40 x 120 x 2000 mm	1.57 x 4.72 x 98 in
50 x 150 x 2000 mm	1.97 x 5.91 x 98 in
60 x 180 x 2000 mm	2.36 x 7.09 x 98 in



METRIC MEASUREMENTS	IMPERIAL MEASUREMENTS
100 x 130 x 2000 mm	3.94 x 5.12 x 98 in
123 x 160 x 2000 mm	4.85 x 6.30 x 98 in
154 x 200 x 2000 mm	6.06 x 7.87 x 98 in



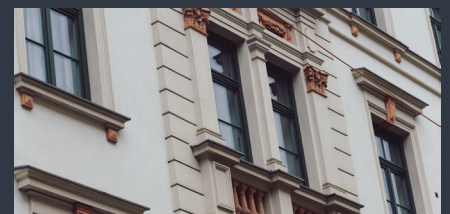
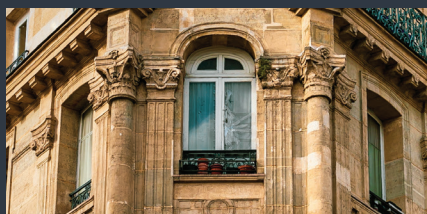
METRIC MEASUREMENTS	IMPERIAL MEASUREMENTS
75 x 120 x 2000 mm	2.95 x 4.72 x 98 in
100 x 160 x 2000 mm	3.94 x 6.30 x 98 in
125 x 200 x 2000 mm	4.92 x 7.87 x 98 in



METRIC MEASUREMENTS	IMPERIAL MEASUREMENTS
150 x 135 x 2000 mm	5.91 x 5.31 x 98 in
194 x 175 x 2000 mm	7.66 x 6.89 x 98 in
222 x 200 x 2000 mm	8.75 x 7.87 x 98 in



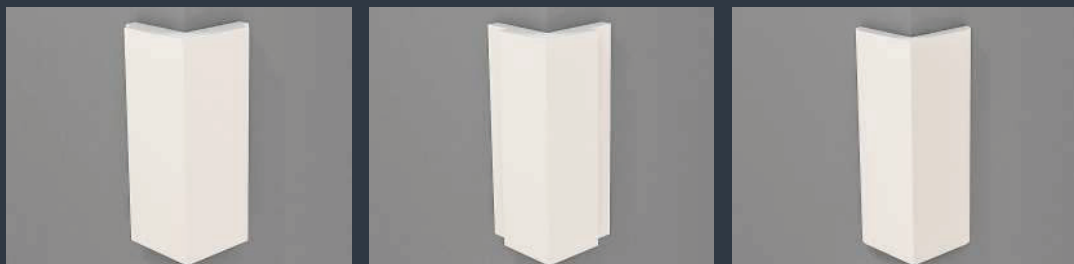
METRIC MEASUREMENTS	IMPERIAL MEASUREMENTS
130 x 130 x 2000 mm	5.12 x 5.12 x 98 in
150 x 150 x 2000 mm	5.91 x 5.91 x 98 in
175 x 175 x 2000 mm	6.89 x 6.89 x 98 in



Quoins and Cornerstones



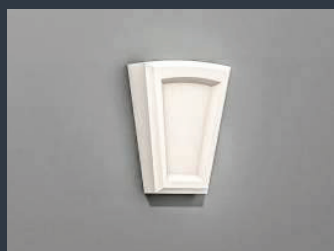
METRIC MEASUREMENTS 330/215 x 215 x 30 mm	IMPERIAL MEASUREMENTS 13/8.46 x 8.46 x 1.18 in	METRIC MEASUREMENTS 250/250 x 215 x 30 mm	IMPERIAL MEASUREMENTS 9.84/9.84 x 8.46 x 1.18 in	METRIC MEASUREMENTS 330/215 x 215 x 30 mm	IMPERIAL MEASUREMENTS 13/8.46 x 8.46 x 1.18 in	METRIC MEASUREMENTS 250/250 x 215 x 30 mm	IMPERIAL MEASUREMENTS 9.84/9.84 x 8.46 x 1.18 in
		250/250 x 250 x 30 mm	9.84/9.84 x 9.84 x 1.18 in			250/250 x 250 x 30 mm	9.84/9.84 x 9.84 x 1.18 in
		300/300 x 250 x 30 mm	11.81/11.81 x 9.84 x 1.18 in			300/300 x 250 x 30 mm	11.81/11.81 x 9.84 x 1.18 in
		250/300 x 300 x 30 mm	9.84/11.81 x 11.81 x 1.18 in			250/300 x 300 x 30 mm	9.84/11.81 x 11.81 x 1.18 in



METRIC MEASUREMENTS 160/160 x 40 x 2000 mm	IMPERIAL MEASUREMENTS 6.30/6.30 x 1.57 x 96 in	METRIC MEASUREMENTS 160/160 x 40 x 2000 mm	IMPERIAL MEASUREMENTS 6.30/6.30 x 1.57 x 96 in	METRIC MEASUREMENTS 100/100 x 15 x 2000 mm	IMPERIAL MEASUREMENTS 3.94/3.94 x 0.60 x 96 in
---	---	---	---	---	---



Keystones, Props and Brackets



METRIC MEASUREMENTS
90 x 250 x 310 mm



IMPERIAL MEASUREMENTS
3.54 x 9.84 x 12.20 in

METRIC MEASUREMENTS
50 x 178 x 216 mm



IMPERIAL MEASUREMENTS
1.97 x 7.00 x 8.50 in

METRIC MEASUREMENTS
70 x 160 x 200 mm



IMPERIAL MEASUREMENTS
2.76 x 6.30 x 7.87 in

METRIC MEASUREMENTS
110 x 200 x 220 mm

IMPERIAL MEASUREMENTS
4.33 x 7.87 x 8.66 in



METRIC MEASUREMENTS
254 x 450 x 450 mm



IMPERIAL MEASUREMENTS
10 x 17.72 x 17.72 in

METRIC MEASUREMENTS
220 x 450 x 350 mm



IMPERIAL MEASUREMENTS
8.66 x 17.72 x 13.78 in

METRIC MEASUREMENTS
200 x 700 x 420 mm

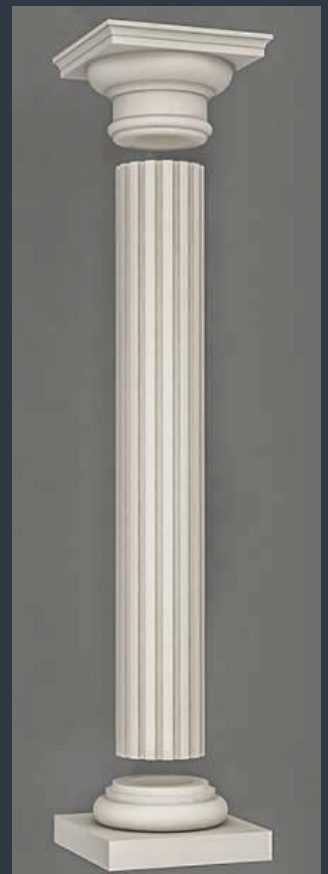
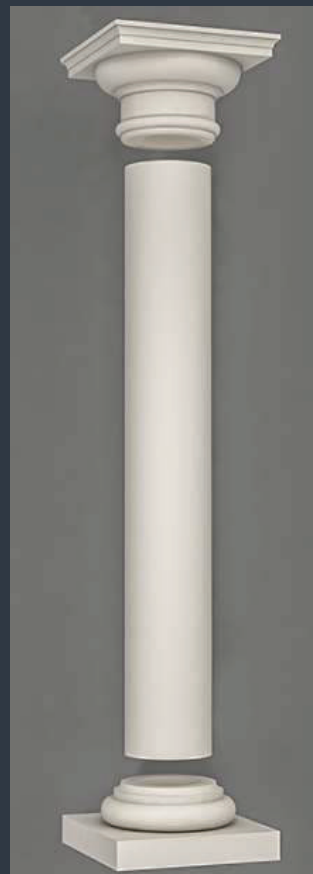
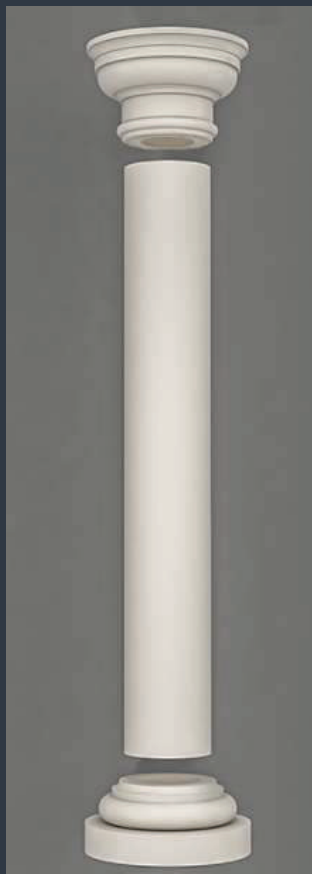


IMPERIAL MEASUREMENTS
7.87 x 27.56 x 16.54 in

METRIC MEASUREMENTS
285 x 410 x 200 mm

IMPERIAL MEASUREMENTS
11.22 x 16.14 x 7.87 in

Columns and Pilasters



	METRIC MEASUREMENTS	IMPERIAL MEASUREMENTS
CAPITOL	620 x 340 mm	24.41 x 13.39 in
BODY	355 x 2000 mm	13.98 x 78.74 in
BASE	474 x 206 mm	18.66 x 8.11 in

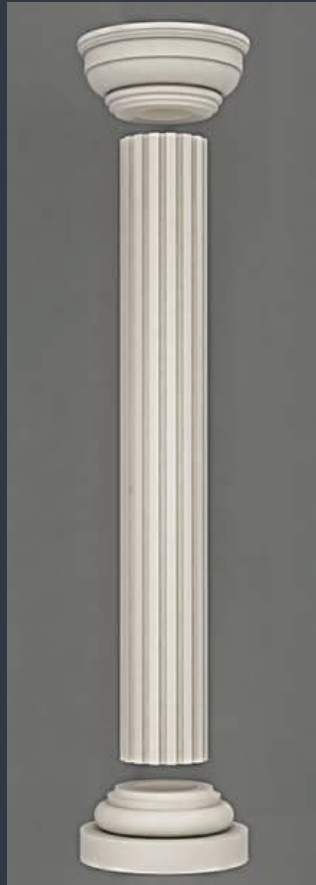
	METRIC MEASUREMENTS	IMPERIAL MEASUREMENTS
CAPITOL	620 x 340 mm	24.41 x 13.39 in
BODY	355 x 2000 mm	13.98 x 78.74 in
BASE	474 x 206 mm	18.66 x 8.11 in

	METRIC MEASUREMENTS	IMPERIAL MEASUREMENTS
CAPITOL	620 x 340 mm	24.41 x 13.39 in
BODY	355 x 2000 mm	13.98 x 78.74 in
BASE	474 x 206 mm	18.66 x 8.11 in

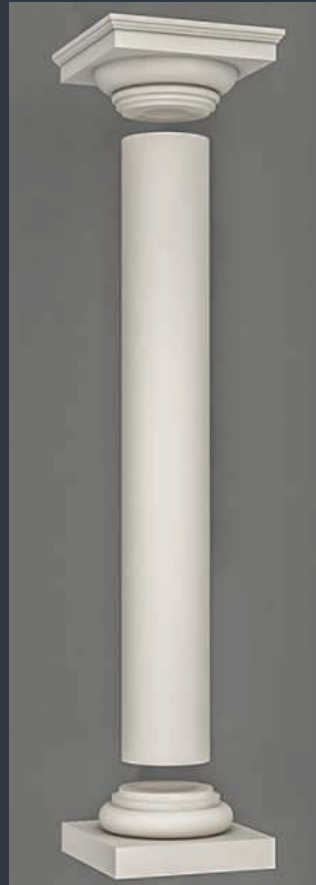
	METRIC MEASUREMENTS	IMPERIAL MEASUREMENTS
CAPITOL	620 x 340 mm	24.41 x 13.39 in
BODY	355 x 2000 mm	13.98 x 78.74 in
BASE	474 x 206 mm	18.66 x 8.11 in



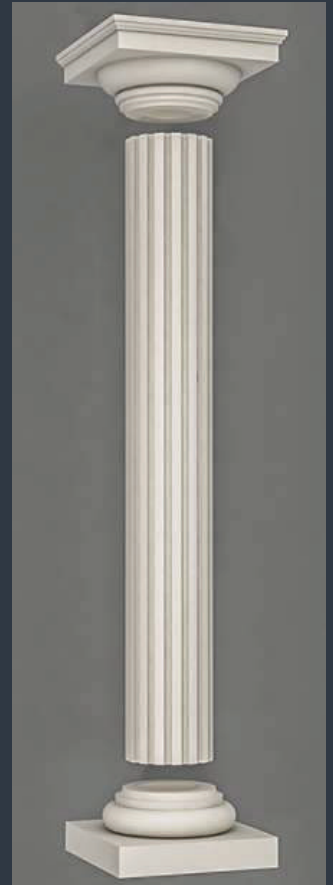
	METRIC MEASUREMENTS	IMPERIAL MEASUREMENTS
CAPITOL	620 x 255 mm	24.41 x 10.04 in
BODY	355 x 2000 mm	13.98 x 78.74 in
BASE	474 x 206 mm	18.66 x 8.11 in



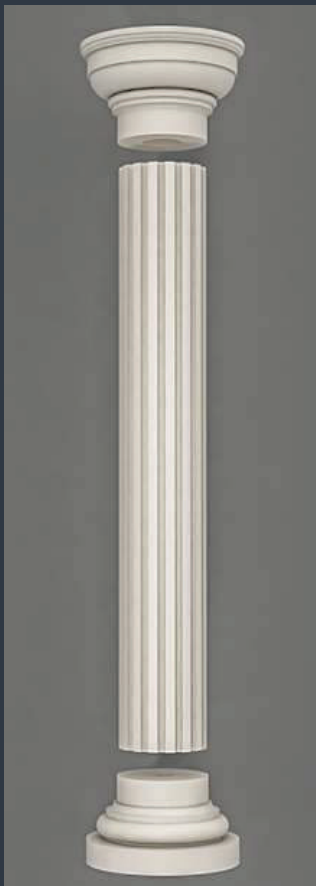
	METRIC MEASUREMENTS	IMPERIAL MEASUREMENTS
CAPITOL	620 x 255 mm	24.41 x 10.04 in
BODY	355 x 2000 mm	13.98 x 78.74 in
BASE	474 x 206 mm	18.66 x 8.11 in



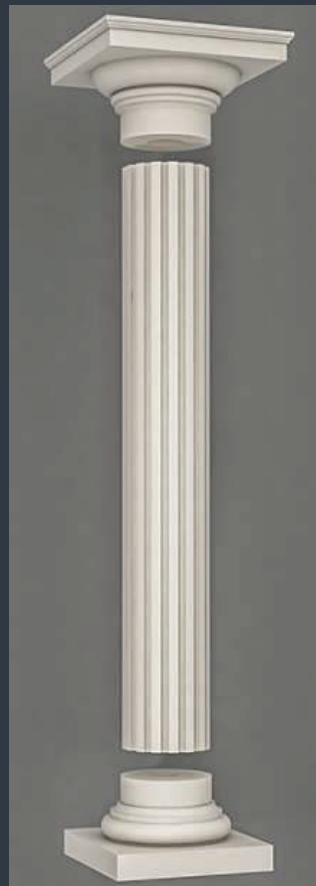
	METRIC MEASUREMENTS	IMPERIAL MEASUREMENTS
CAPITOL	620 x 255 mm	24.41 x 10.04 in
BODY	355 x 2000 mm	13.98 x 78.74 in
BASE	474 x 206 mm	18.66 x 8.11 in



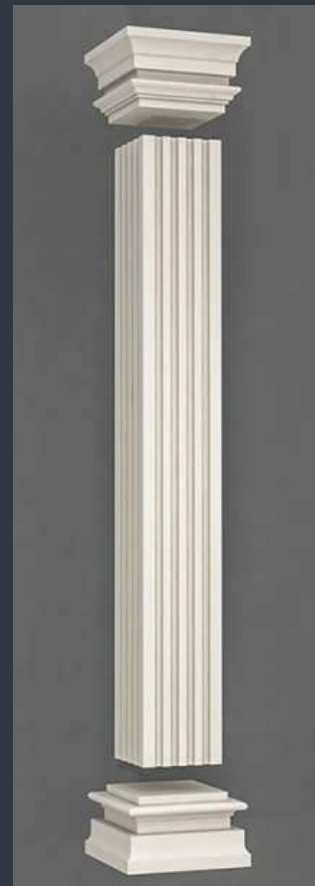
	METRIC MEASUREMENTS	IMPERIAL MEASUREMENTS
CAPITOL	620 x 255 mm	24.41 x 10.04 in
BODY	355 x 2000 mm	13.98 x 78.74 in
BASE	474 x 206 mm	18.66 x 8.11 in



	METRIC MEASUREMENTS	IMPERIAL MEASUREMENTS
CAPITOL	620 x 340 mm	24.41 x 13.39 in
BODY	355 x 2000 mm	13.98 x 78.74 in
BASE	474 x 206 mm	18.66 x 8.11 in



	METRIC MEASUREMENTS	IMPERIAL MEASUREMENTS
CAPITOL	620 x 340 mm	24.41 x 13.39 in
BODY	355 x 2000 mm	13.98 x 78.74 in
BASE	474 x 206 mm	18.66 x 8.11 in

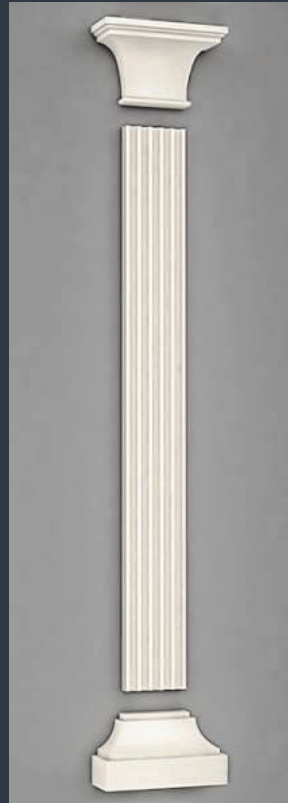


	METRIC MEASUREMENTS	IMPERIAL MEASUREMENTS
CAPITOL	550 x 310 mm	21.65 x 12.20 in
BODY	350 x 2000 mm	13.78 x 78.74 in
BASE	540 x 300 mm	21.26 x 11.81 in

Columns and Pilasters



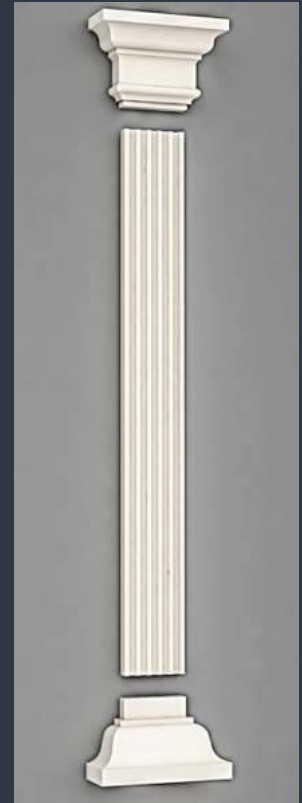
	METRIC MEASUREMENTS	IMPERIAL MEASUREMENTS
CAPITOL	112 x 345 x 170 mm	4.40 x 13.58 x 6.69 in
BODY	40 x 200 x 2000 mm	1.57 x 7.87 x 78.74 in
BASE	100 x 320 x 120 mm	3.93 x 12.60 x 4.72 in



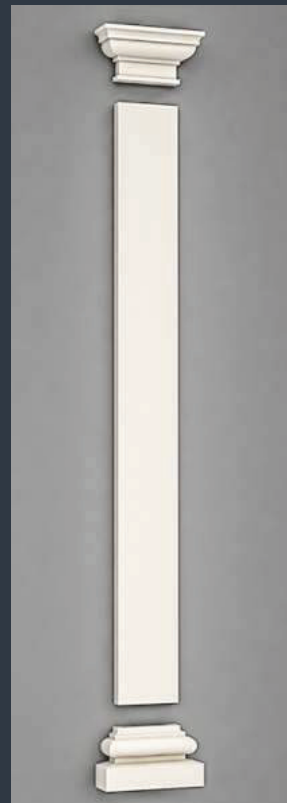
	METRIC MEASUREMENTS	IMPERIAL MEASUREMENTS
CAPITOL	112 x 345 x 170 mm	4.40 x 13.58 x 6.69 in
BODY	40 x 200 x 2000 mm	1.57 x 7.87 x 78.74 in
BASE	100 x 320 x 120 mm	3.93 x 12.60 x 4.72 in



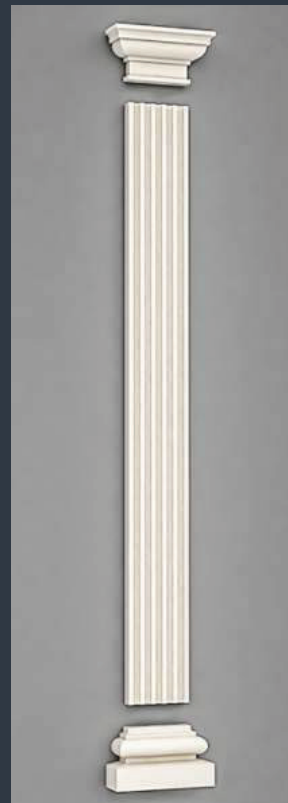
	METRIC MEASUREMENTS	IMPERIAL MEASUREMENTS
CAPITOL	130 x 430 x 215 mm	5.12 x 16.93 x 8.46 in
BODY	50 x 250 x 2000 mm	1.97 x 9.84 x 78.74 in
BASE	140 x 450 x 200 mm	5.51 x 17.72 x 7.87 in



	METRIC MEASUREMENTS	IMPERIAL MEASUREMENTS
CAPITOL	130 x 430 x 215 mm	5.12 x 16.93 x 8.46 in
BODY	50 x 250 x 2000 mm	1.97 x 9.84 x 78.74 in
BASE	140 x 450 x 200 mm	5.51 x 17.72 x 7.87 in



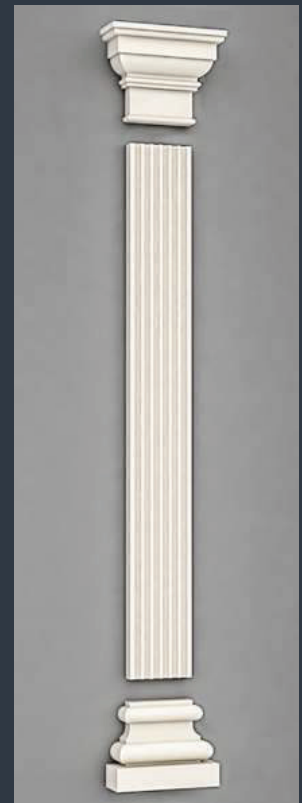
	METRIC MEASUREMENTS	IMPERIAL MEASUREMENTS
CAPITOL	130 x 460 x 180 mm	5.12 x 18.11 x 7.09 in
BODY	60 x 300 x 2000 mm	2.36 x 11.81 x 78.74 in
BASE	105 x 410 x 145 mm	4.14 x 16.14 x 5.71 in



	METRIC MEASUREMENTS	IMPERIAL MEASUREMENTS
CAPITOL	130 x 460 x 180 mm	5.12 x 18.11 x 7.09 in
BODY	60 x 300 x 2000 mm	2.36 x 11.81 x 78.74 in
BASE	105 x 410 x 145 mm	4.14 x 16.14 x 5.71 in



	METRIC MEASUREMENTS	IMPERIAL MEASUREMENTS
CAPITOL	165 x 704 x 340 mm	6.50 x 27.72 x 13.39 in
BODY	65 x 500 x 2000 mm	2.56 x 19.69 x 78.74 in
BASE	165 x 700 x 350 mm	6.50 x 27.56 x 13.78 in



	METRIC MEASUREMENTS	IMPERIAL MEASUREMENTS
CAPITOL	165 x 704 x 340 mm	6.50 x 27.72 x 13.39 in
BODY	65 x 500 x 2000 mm	2.56 x 19.69 x 78.74 in
BASE	165 x 700 x 350 mm	6.50 x 27.56 x 13.78 in

Corniches and Crowns



METRIC MEASUREMENTS	IMPERIAL MEASUREMENTS
85 x 175 x 2000 mm	3.35 x 6.70 x 98 in
110 x 225 x 2000 mm	4.35 x 8.85 x 98 in
145 x 300 x 2000 mm	5.70 x 11.80 x 98 in



METRIC MEASUREMENTS	IMPERIAL MEASUREMENTS
90 x 225 x 2000 mm	3.55 x 8.85 x 98 in
100 x 250 x 2000 mm	3.95 x 9.85 x 98 in
120 x 300 x 2000 mm	4.70 x 11.80 x 98 in



METRIC MEASUREMENTS	IMPERIAL MEASUREMENTS
75 x 205 x 2000 mm	2.95 x 8.05 x 98 in
90 x 250 x 2000 mm	3.55 x 9.85 x 98 in
110 x 300 x 2000 mm	4.30 x 11.80 x 98 in



METRIC MEASUREMENTS	IMPERIAL MEASUREMENTS
135 x 210 x 2000 mm	5.30 x 8.25 x 98 in
160 x 250 x 2000 mm	6.30 x 9.85 x 98 in
195 x 300 x 2000 mm	7.70 x 11.80 x 98 in



METRIC MEASUREMENTS	IMPERIAL MEASUREMENTS
135 x 210 x 2000 mm	5.30 x 8.25 x 98 in
160 x 250 x 2000 mm	6.30 x 9.85 x 98 in
195 x 300 x 2000 mm	7.70 x 11.80 x 98 in



METRIC MEASUREMENTS	IMPERIAL MEASUREMENTS
150 x 250 x 2000 mm	5.90 x 9.85 x 98 in
180 x 300 x 2000 mm	7.10 x 11.80 x 98 in
210 x 350 x 2000 mm	8.25 x 13.80 x 98 in



METRIC MEASUREMENTS	IMPERIAL MEASUREMENTS
100 x 225 x 2000 mm	3.95 x 8.85 x 98 in
135 x 300 x 2000 mm	5.30 x 11.80 x 98 in
180 x 400 x 2000 mm	7.10 x 15.75 x 98 in



METRIC MEASUREMENTS	IMPERIAL MEASUREMENTS
150 x 270 x 2000 mm	5.90 x 10.60 x 98 in
165 x 300 x 2000 mm	6.50 x 11.80 x 98 in
195 x 350 x 2000 mm	7.70 x 13.80 x 98 in



METRIC MEASUREMENTS	IMPERIAL MEASUREMENTS
80 x 270 x 2000 mm	3.15 x 10.60 x 98 in
105 x 350 x 2000 mm	4.10 x 13.80 x 98 in
120 x 400 x 2000 mm	4.70 x 15.75 x 98 in



METRIC MEASUREMENTS	IMPERIAL MEASUREMENTS
75 x 165 x 2000 mm	2.95 x 6.50 x 98 in
95 x 210 x 2000 mm	3.75 x 8.25 x 98 in
115 x 250 x 2000 mm	4.55 x 9.85 x 98 in



METRIC MEASUREMENTS	IMPERIAL MEASUREMENTS
130 x 185 x 2000 mm	5.10 x 7.30 x 98 in
165 x 230 x 2000 mm	6.50 x 9.00 x 98 in
200 x 280 x 2000 mm	7.90 x 11.00 x 98 in



METRIC MEASUREMENTS	IMPERIAL MEASUREMENTS
130 x 255 x 2000 mm	5.10 x 10.00 x 98 in
155 x 300 x 2000 mm	6.10 x 11.80 x 98 in
205 x 400 x 2000 mm	8.05 x 15.75 x 98 in



METRIC MEASUREMENTS	IMPERIAL MEASUREMENTS
135 x 260 x 2000 mm	5.30 x 10.25 x 98 in
155 x 300 x 2000 mm	6.10 x 11.80 x 98 in
210 x 400 x 2000 mm	8.25 x 15.75 x 98 in



METRIC MEASUREMENTS	IMPERIAL MEASUREMENTS
125 x 260 x 2000 mm	4.90 x 10.25 x 98 in
145 x 300 x 2000 mm	5.70 x 11.80 x 98 in
190 x 400 x 2000 mm	7.50 x 15.75 x 98 in



METRIC MEASUREMENTS	IMPERIAL MEASUREMENTS
135 x 290 x 2000 mm	5.30 x 11.40 x 98 in
165 x 350 x 2000 mm	6.50 x 13.80 x 98 in
185 x 400 x 2000 mm	7.25 x 15.75 x 98 in



METRIC MEASUREMENTS	IMPERIAL MEASUREMENTS
200 x 200 x 2000 mm	8.00 x 8.00 x 98 in
250 x 250 x 2000 mm	10.00 x 10.00 x 98 in
300 x 300 x 2000 mm	12.00 x 12.00 x 98 in



METRIC MEASUREMENTS	IMPERIAL MEASUREMENTS
110 x 230 x 2000 mm	4.30 x 9.05 x 98 in
158 x 330 x 2000 mm	6.20 x 13.00 x 98 in
190 x 400 x 2000 mm	7.50 x 15.75 x 98 in



METRIC MEASUREMENTS	IMPERIAL MEASUREMENTS
95 x 220 x 2000 mm	3.75 x 8.65 x 98 in
150 x 350 x 2000 mm	5.90 x 13.80 x 98 in
170 x 400 x 2000 mm	6.70 x 15.75 x 98 in



METRIC MEASUREMENTS	IMPERIAL MEASUREMENTS
95 x 350 x 2000 mm	3.75 x 13.80 x 98 in
110 x 400 x 2000 mm	4.30 x 15.75 x 98 in
120 x 450 x 2000 mm	4.72 x 17.70 x 98 in



METRIC MEASUREMENTS	IMPERIAL MEASUREMENTS
225 x 300 x 2000 mm	8.85 x 11.80 x 98 in
265 x 350 x 2000 mm	10.43 x 13.80 x 98 in
300 x 400 x 2000 mm	11.80 x 15.75 x 98 in



METRIC MEASUREMENTS	IMPERIAL MEASUREMENTS
150 x 185 x 2000 mm	5.90 x 7.30 x 98 in
190 x 235 x 2000 mm	7.50 x 9.25 x 98 in
230 x 285 x 2000 mm	9.05 x 11.22 x 98 in



METRIC MEASUREMENTS	IMPERIAL MEASUREMENTS
200 x 220 x 2000 mm	7.85 x 8.65 x 98 in
235 x 260 x 2000 mm	9.25 x 10.25 x 98 in
275 x 300 x 2000 mm	10.85 x 11.80 x 98 in



METRIC MEASUREMENTS	IMPERIAL MEASUREMENTS
80 x 250 x 2000 mm	3.15 x 9.85 x 98 in
100 x 300 x 2000 mm	3.95 x 11.80 x 98 in
115 x 350 x 2000 mm	4.55 x 13.80 x 98 in



METRIC MEASUREMENTS	IMPERIAL MEASUREMENTS
200 x 300 x 2000 mm	7.85 x 11.80 x 98 in
230 x 350 x 2000 mm	9.05 x 13.80 x 98 in
265 x 400 x 2000 mm	10.45 x 15.75 x 98 in



METRIC MEASUREMENTS	IMPERIAL MEASUREMENTS
150 x 270 x 2000 mm	5.90 x 10.63 x 98 in
180 x 320 x 2000 mm	7.10 x 12.60 x 98 in
215 x 380 x 2000 mm	8.45 x 14.95 x 98 in



METRIC MEASUREMENTS	IMPERIAL MEASUREMENTS
190 x 250 x 2000 mm	7.50 x 9.85 x 98 in
225 x 300 x 2000 mm	8.85 x 11.80 x 98 in
265 x 350 x 2000 mm	10.45 x 13.80 x 98 in



METRIC MEASUREMENTS	IMPERIAL MEASUREMENTS
105 x 200 x 2000 mm	4.10 x 7.90 x 98 in
130 x 250 x 2000 mm	5.10 x 9.90 x 98 in
160 x 300 x 2000 mm	6.30 x 11.80 x 98 in





In Partnership With

BAUGRUP[®]

SMART BUILDING SOLUTIONS

Get in Touch

Address

396, 3RD FLOOR, 1st Main Road, Judges
Colony, K H M Block, Ganganagar,
Bengaluru, Karnataka 560032

Phone Number

91 98800 69991

Email

info@clado.org.in



Visit Our Website